

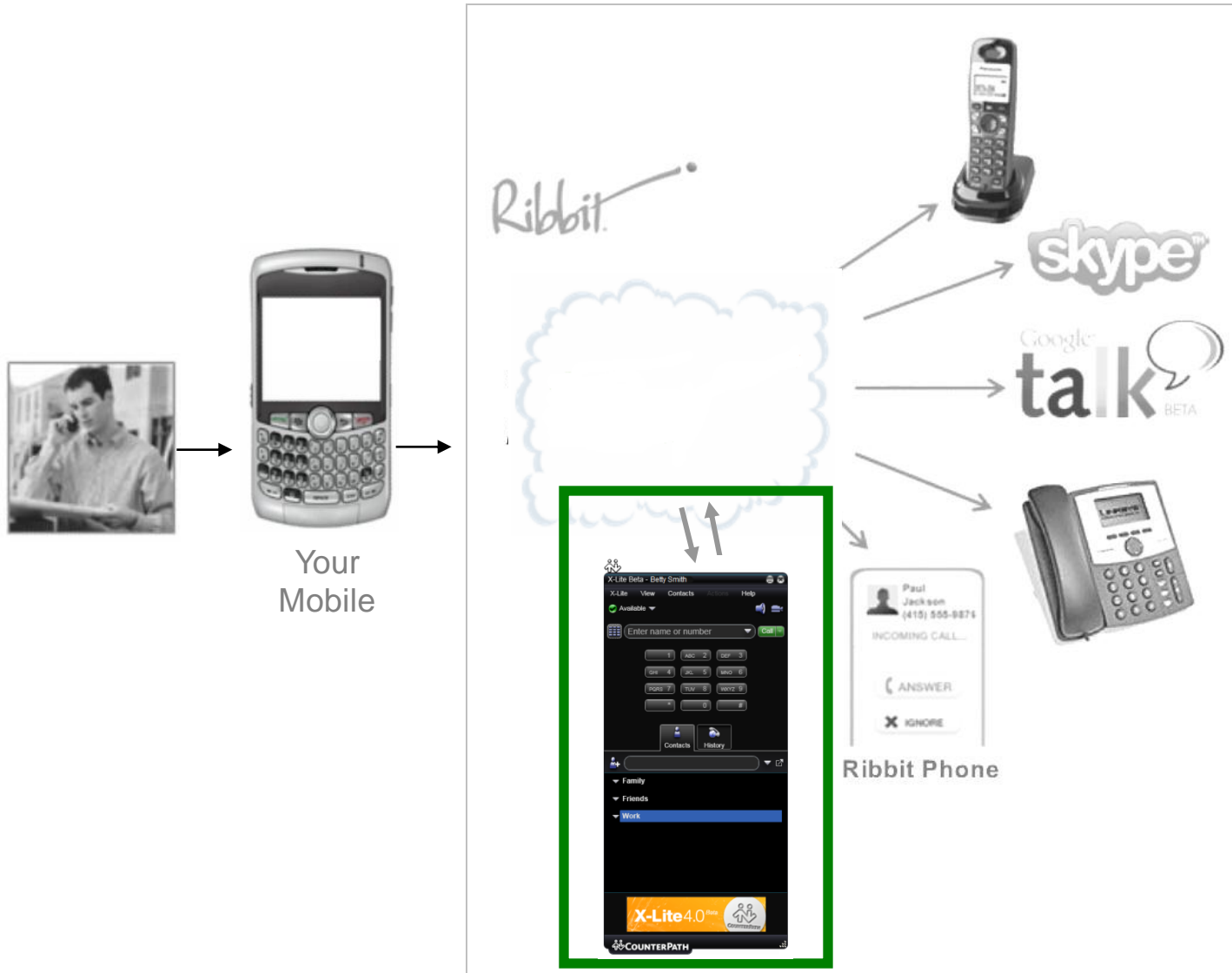
Ribbit Mobile

# **X-Lite (SIP) Phone Installation Guide for Windows PC**

Updated: June 2010



With the X-Lite SIP phone, you can make and receive calls from your PC, with outstanding voice quality through the Ribbit Mobile network!

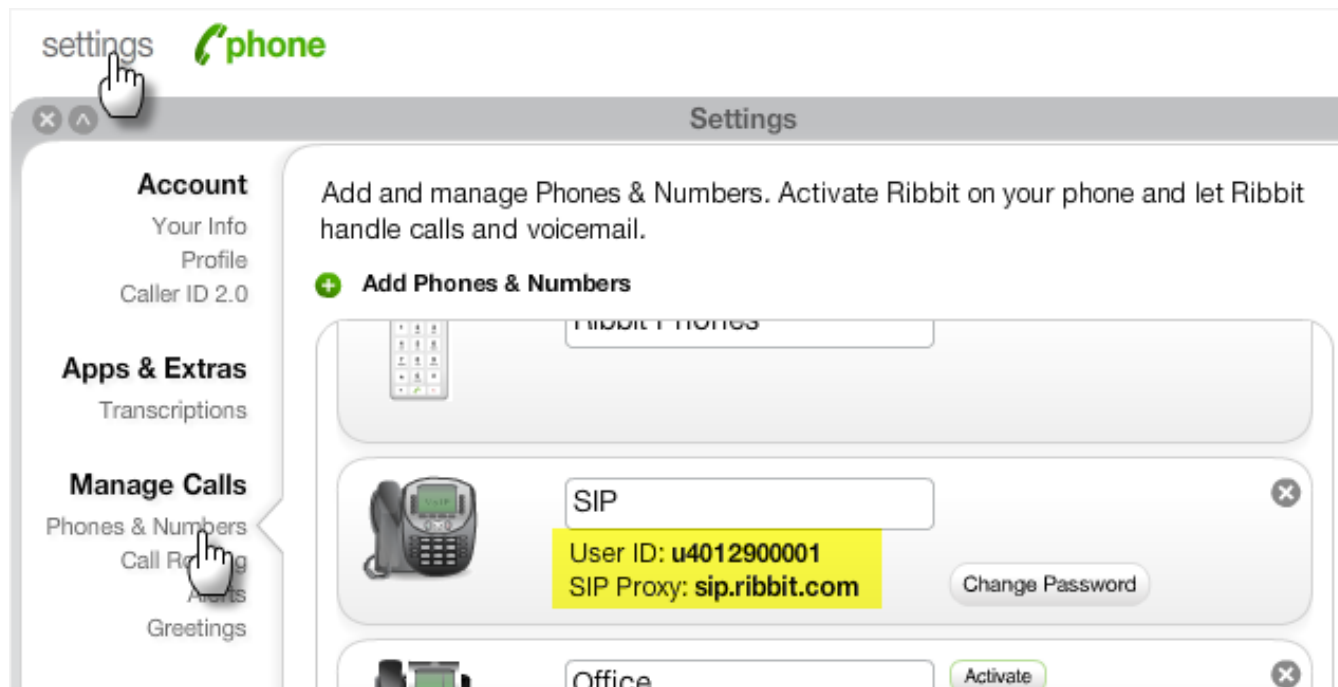


# SIP Phone Installation Steps

**Step 1** – SIP phone service is added to Ribbit Mobile accounts by request only. Send your request to [support@ribbit.com](mailto:support@ribbit.com).

If approved, our support team will let you know a new SIP line has been added to your Ribbit Mobile account.

**Step 2** – Log into your online Ribbit Mobile account. Click Settings > Phones & Numbers, and you'll see the SIP line. Write down the **User ID** and **SIP Proxy**:



**Step 3** - Now Download the X-Lite phone to your computer:

Go to: <http://www.counterpath.com/x-lite-download.html>

Click the download link and install the free soft-phone to your PC. We recommend installing the **4.0 Beta** version, which has been tested on Ribbit:

### Download X-Lite 3.0

Download X-Lite 3.0 for Windows

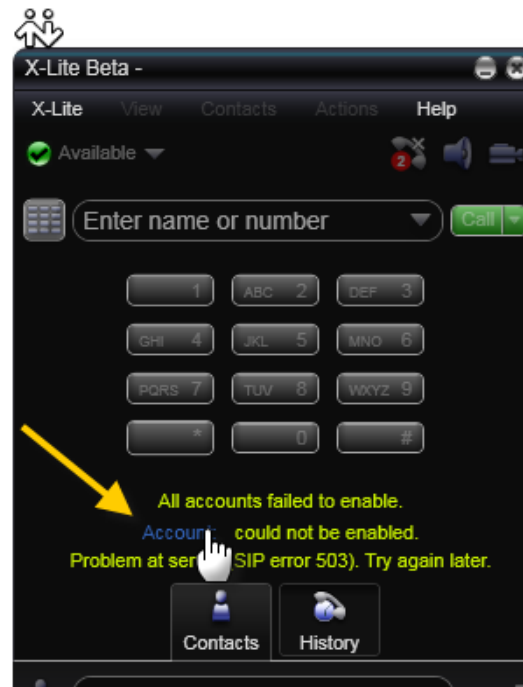


### NEW! Download X-Lite 4.0 BETA

Download X-Lite 4.0 Beta for Windows



**Step 4** – After the soft-phone is installed, click the Account link:



*If using the 3.0 version of X-Lite, click the button at top left, then click SIP account Settings, then Add:*



## Step 5 – In the Account tab, input data from your Ribbit Mobile SIP line:

X-Lite Beta -

SIP Account

Account | Voicemail | Topology | Presence | Transport | Advanced

Account name: Betty Smith

Protocol: SIP

User Details

\* User ID: u4012900001

\* Domain: sip.ribbit.com

Password: .....

Display name: Betty Smith

Authorization name: u4012900001

Domain Proxy

Register with domain and receive calls

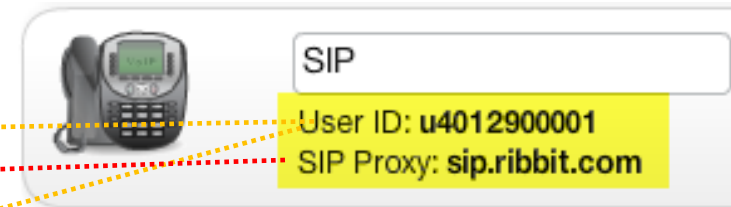
Send outbound via:

Domain

Proxy Address:

Dial plan: #1\|a|a.T;match=1;prestrip=2;

OK Cancel



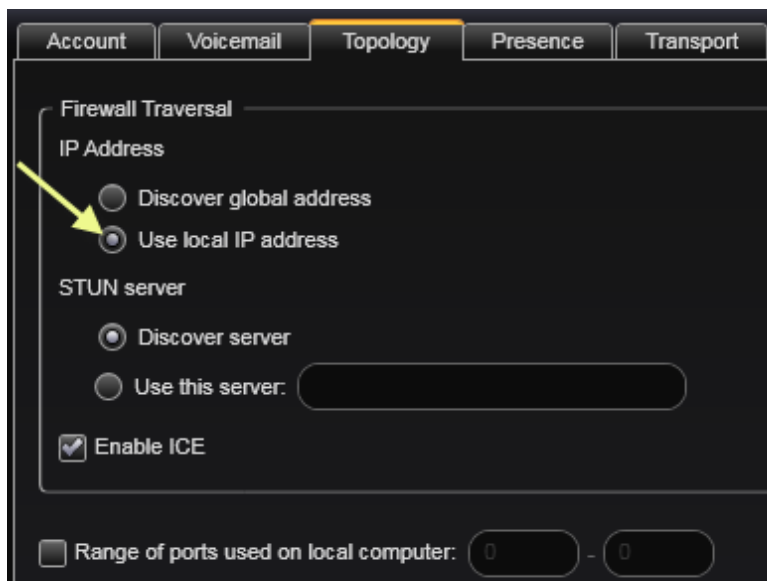
Password will be provided by Ribbit Support team

1. Check "Register with domain and receive incoming calls."

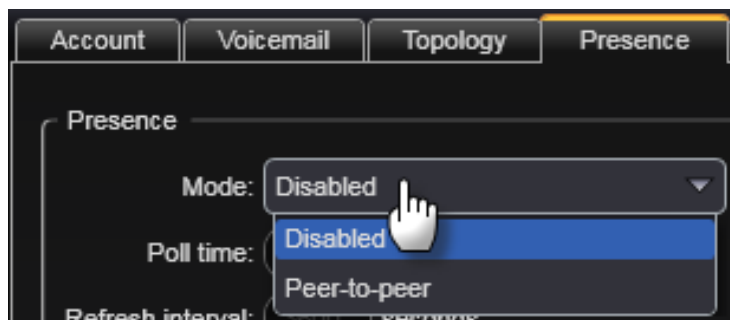
2. Send outbound via: select domain.

Keep other fields at their default values, then click OK.

**Step 6** – In the Topology tab, mark “Use local IP address”

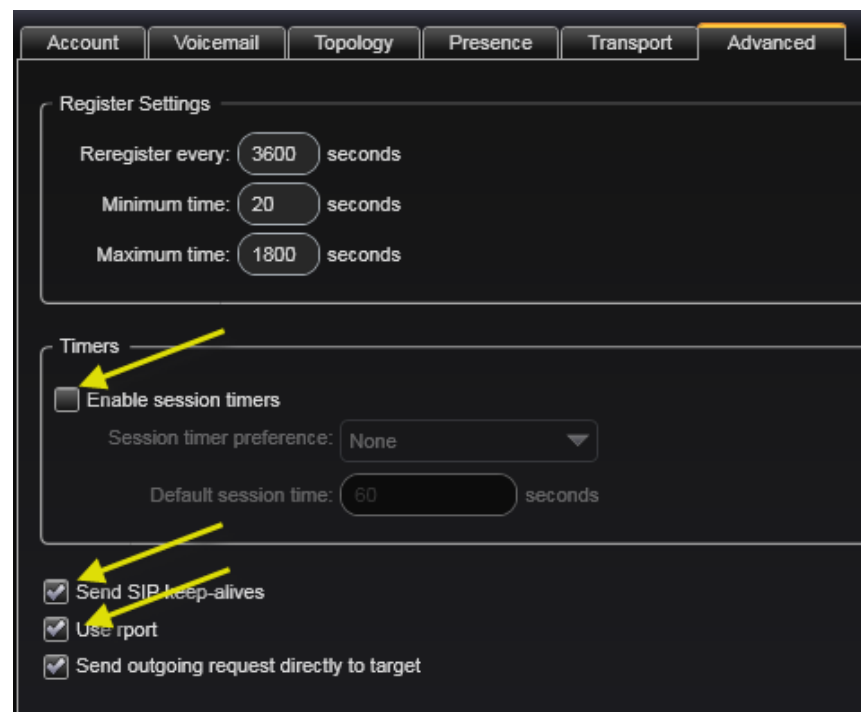


**Step 7** – In the Presence tab, Disable the Mode:



**Step 8** – Click the Advanced tab:

1. Make sure both Advanced Options (Send SIP keep-alives and Use report) are checked.
2. Make sure Enable session timers is NOT checked. Click OK to close.



The phone is now active and ready to make calls!



To receive calls onto the SIP phone, make sure it's set to Ring in Call Routing:



**Note** – If you're connecting a new phone to an existing SIP Device in your Ribbit Mobile account, in the Settings > Call Routing panel change the password to match the password used when you set up the phone:

